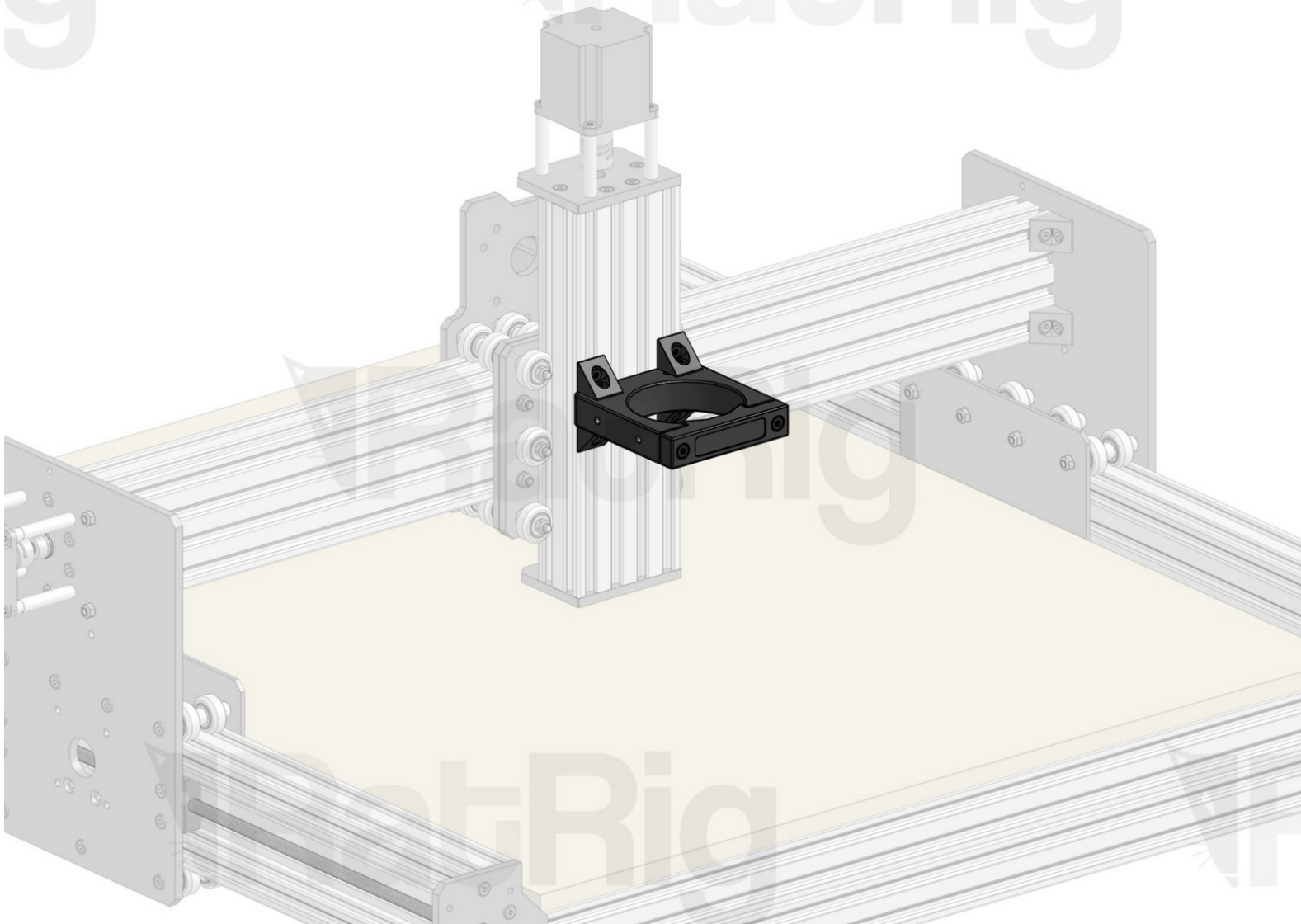


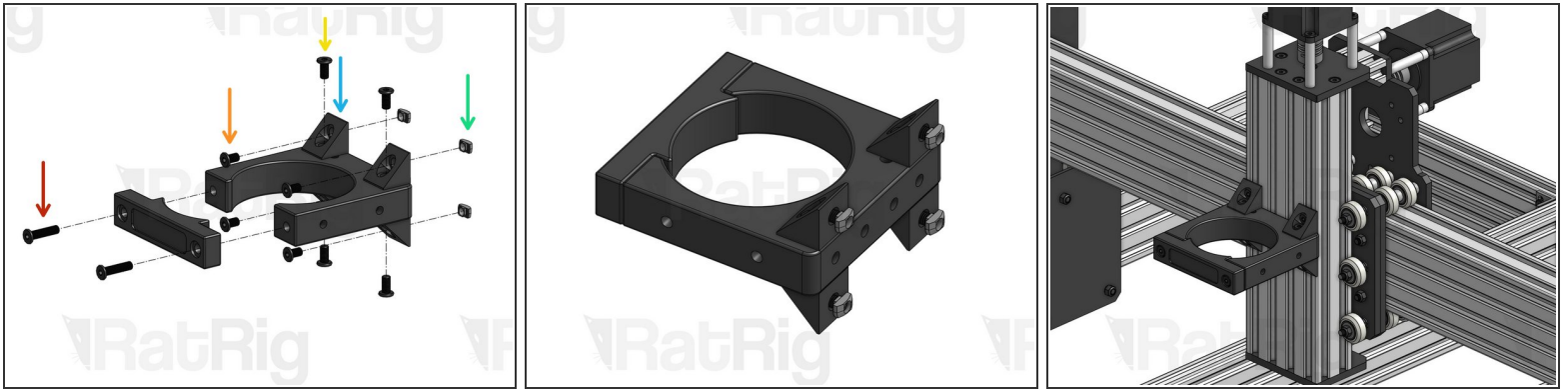
Rat Rig

07. Router/Spindle Mount Assembly

Written By: Rat Rig



Step 1 — Assemble Spindle/Router Mount



- Low Profile Screw M5x20mm. You will use them to clamp your router inside the mount. No need to tighten them all the way down for now.
- Low Profile Screw M5x8mm
- Low Profile Screw M5x10mm
- 90° Angle Corner Connector. Position it so it's perfectly flush with the back of the mount.
- Drop-in T-Nut M5 - set in position, but don't tighten yet.
- After assembling the mount, fit it inside the Z C-Beam slots, checking if it's perpendicular to it, and tighten the M5x8mm screws.
- **i** The Mount position depends on what jobs you are planning to do, however 1/3 of the way up the extrusion is a good position for normal work.