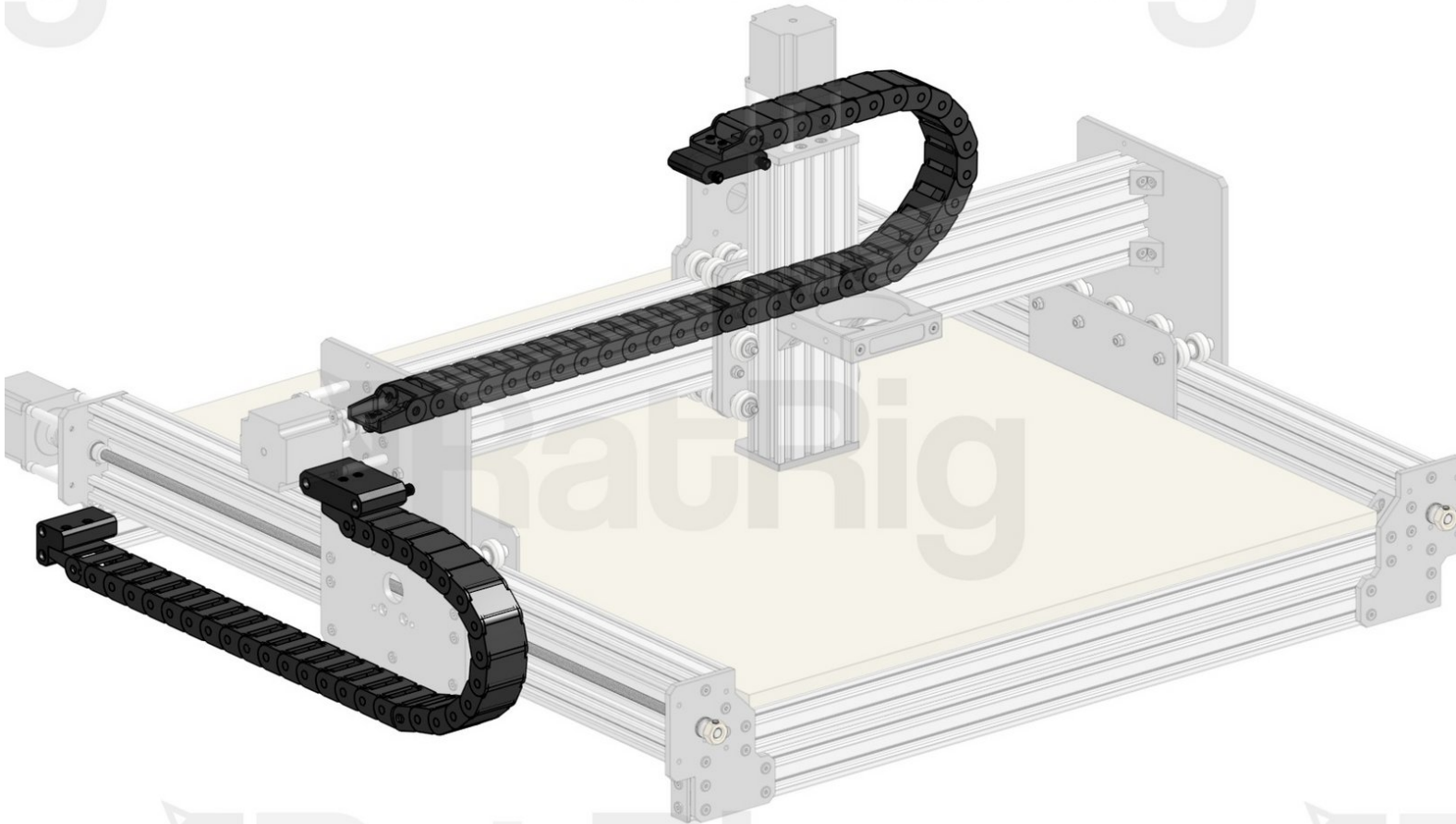


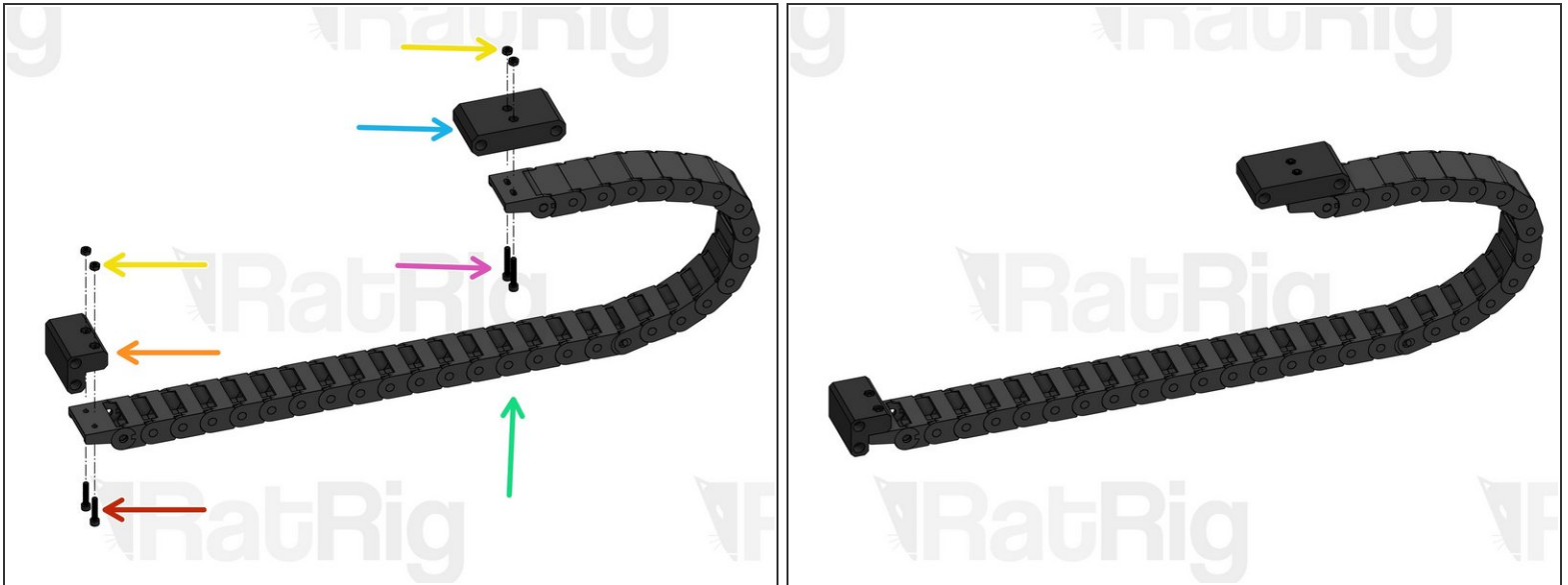
Rat Rig

09. Drag Chain Assembly

Written By: Rat Rig



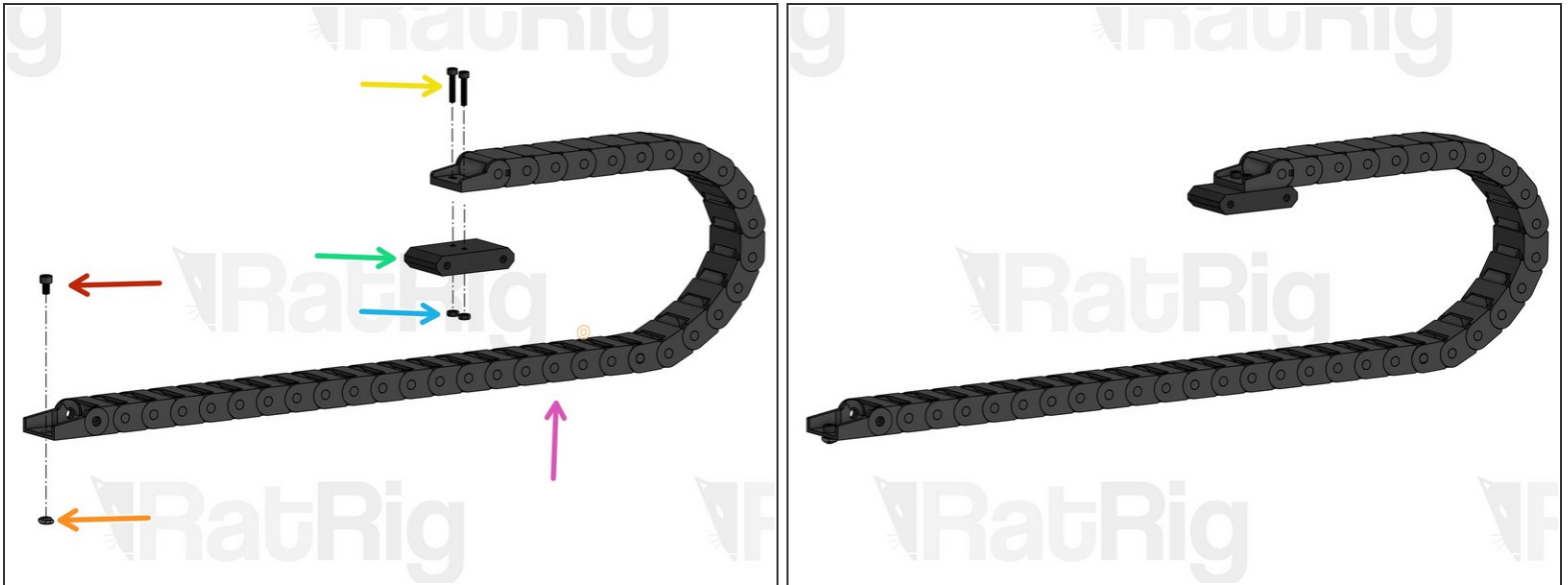
Step 1 — Assemble Y Drag Chain Mounts



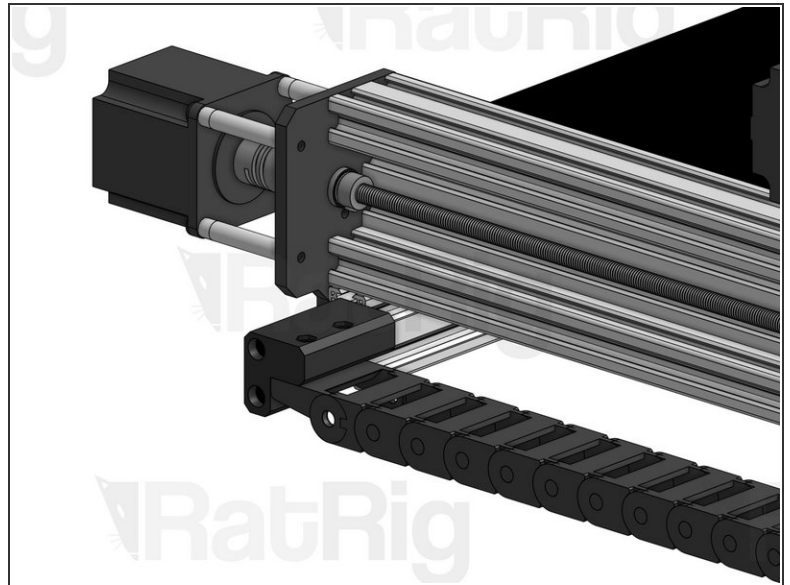
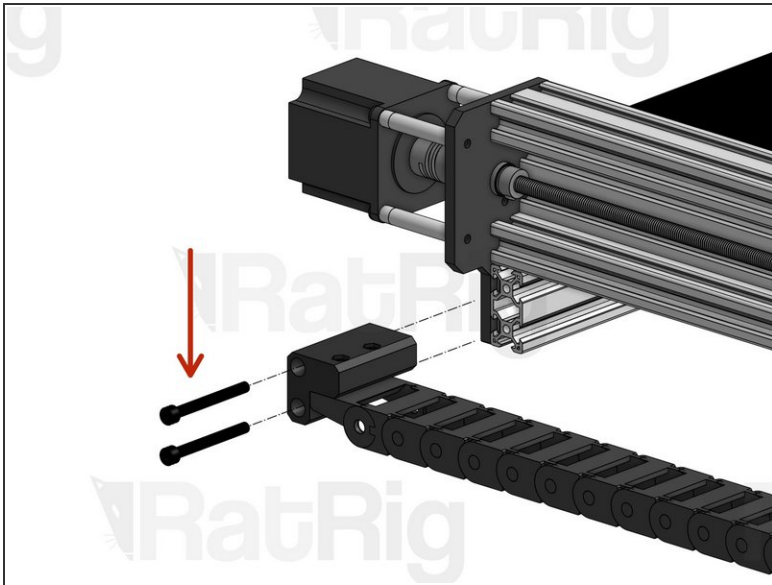
i If your machine has the same length on X and Y, both drag chains on your wiring kit will have the same length. Otherwise, note that the drag chain for a specific axis will be around 200mm longer than that axis.

- M4 Hex Nut
- Y Drag Chain Bottom Mount
- Cap Head Screw M4x20mm
- Y Drag Chain Top Mount
- Cap Head Screw M4x25mm
- Y Drag Chain

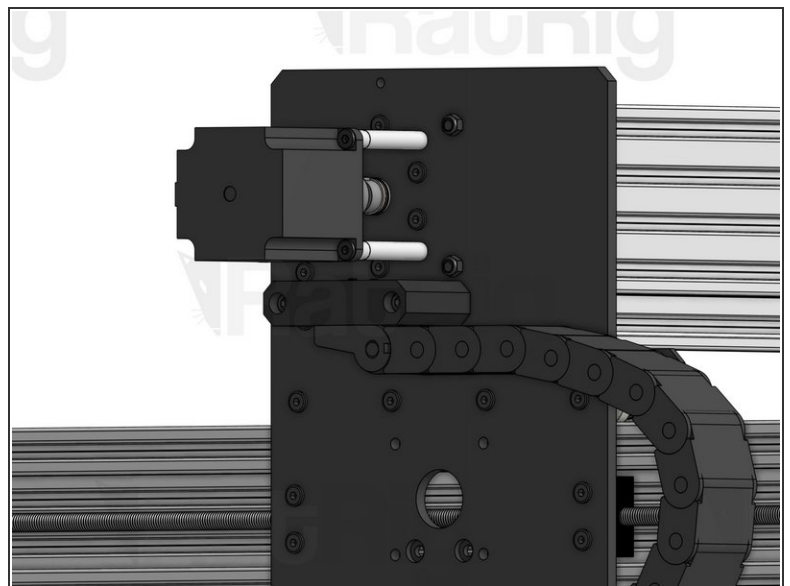
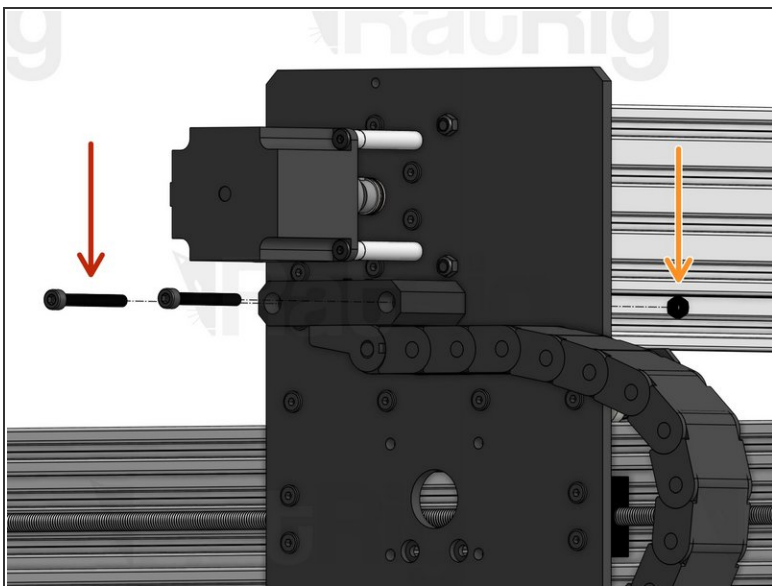
Step 2 — Assemble X Drag Chain Mounts



- Cap Head Screw M4x8mm
- Drop-in T-Nut M4. Set into position, but don't tighten yet.
- Cap Head Screw M4x20mm
- X Drag Chain Mount
- M4 Hex Nut
- X Drag Chain

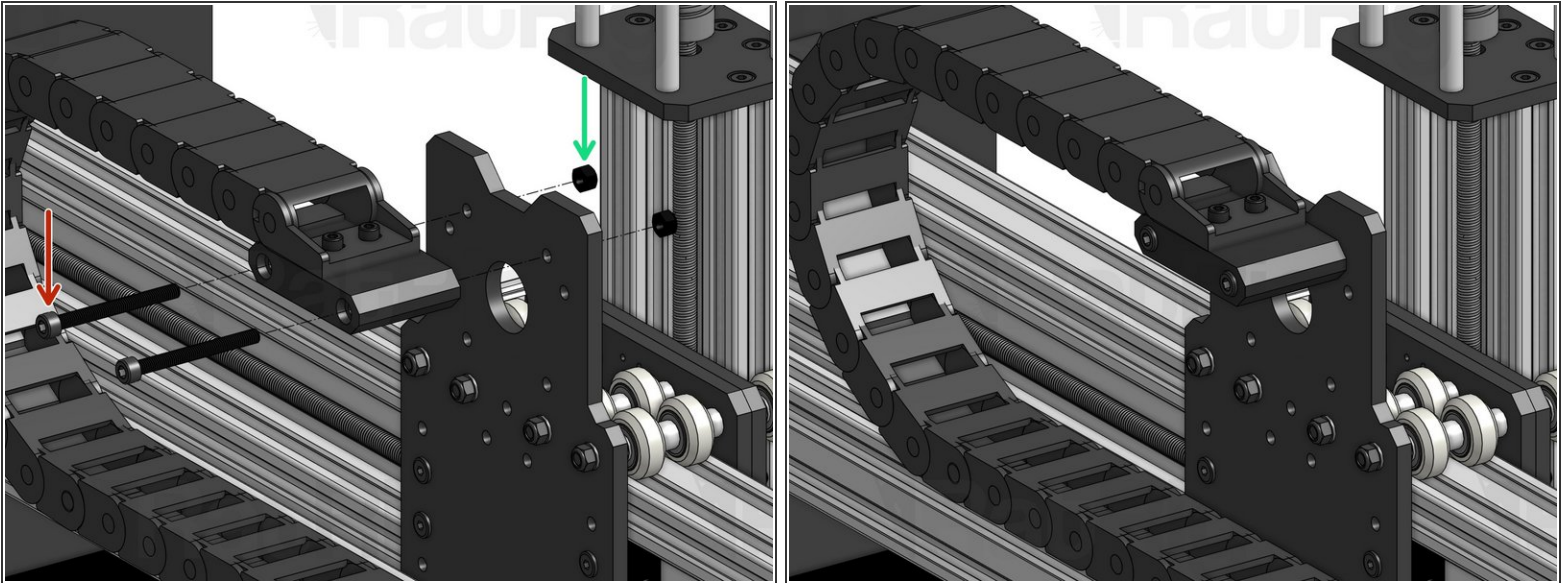
Step 3 — Mount Y Drag Chain on machine (1)

- Cap Head Screw M5x50mm

Step 4 — Mount Y Drag Chain on machine (2)

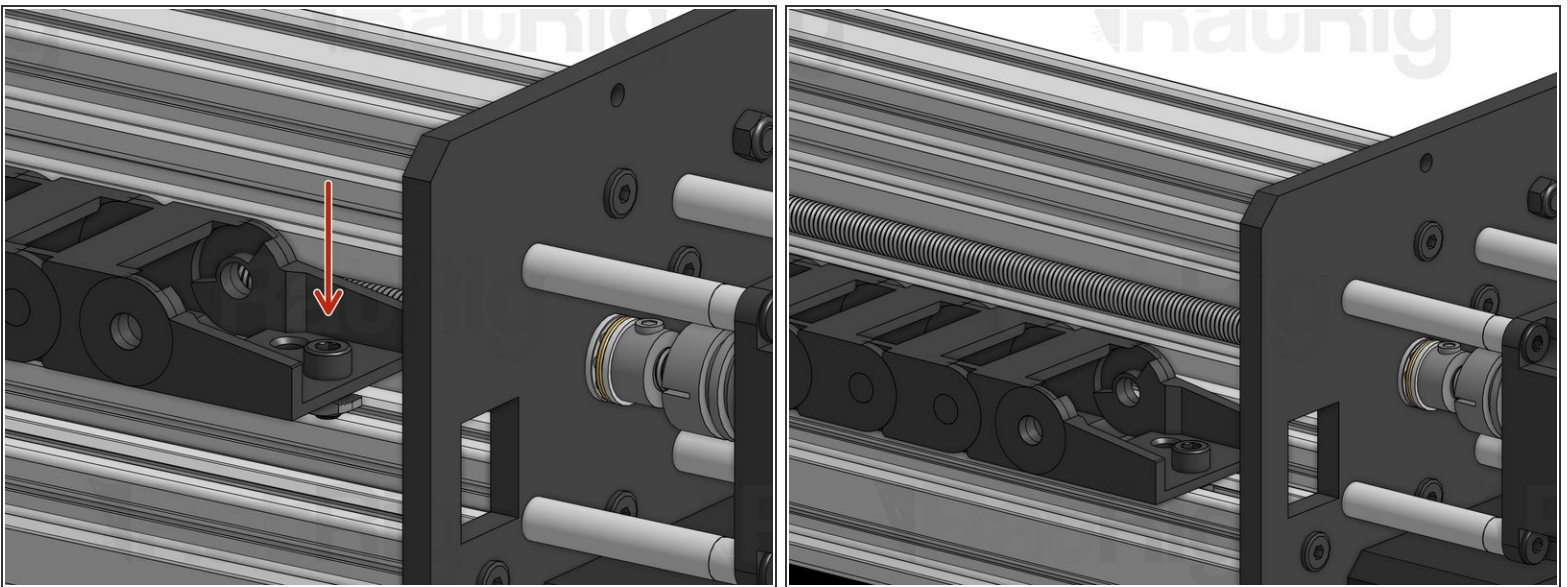
- Cap Head Screw M5x45mm
- Hex Locking Nut M5

Step 5 — Attach X Drag Chain to XZ Carriage Plate



- Cap Head Screw M5x50mm
- Hex Locking Nut M5

Step 6 — Attach X Drag Chain to 2040 Profile



- Fit the Drop-in T-Nut mounted on the drag chain inside the 2040 slot and tighten the screw to lock it in place.