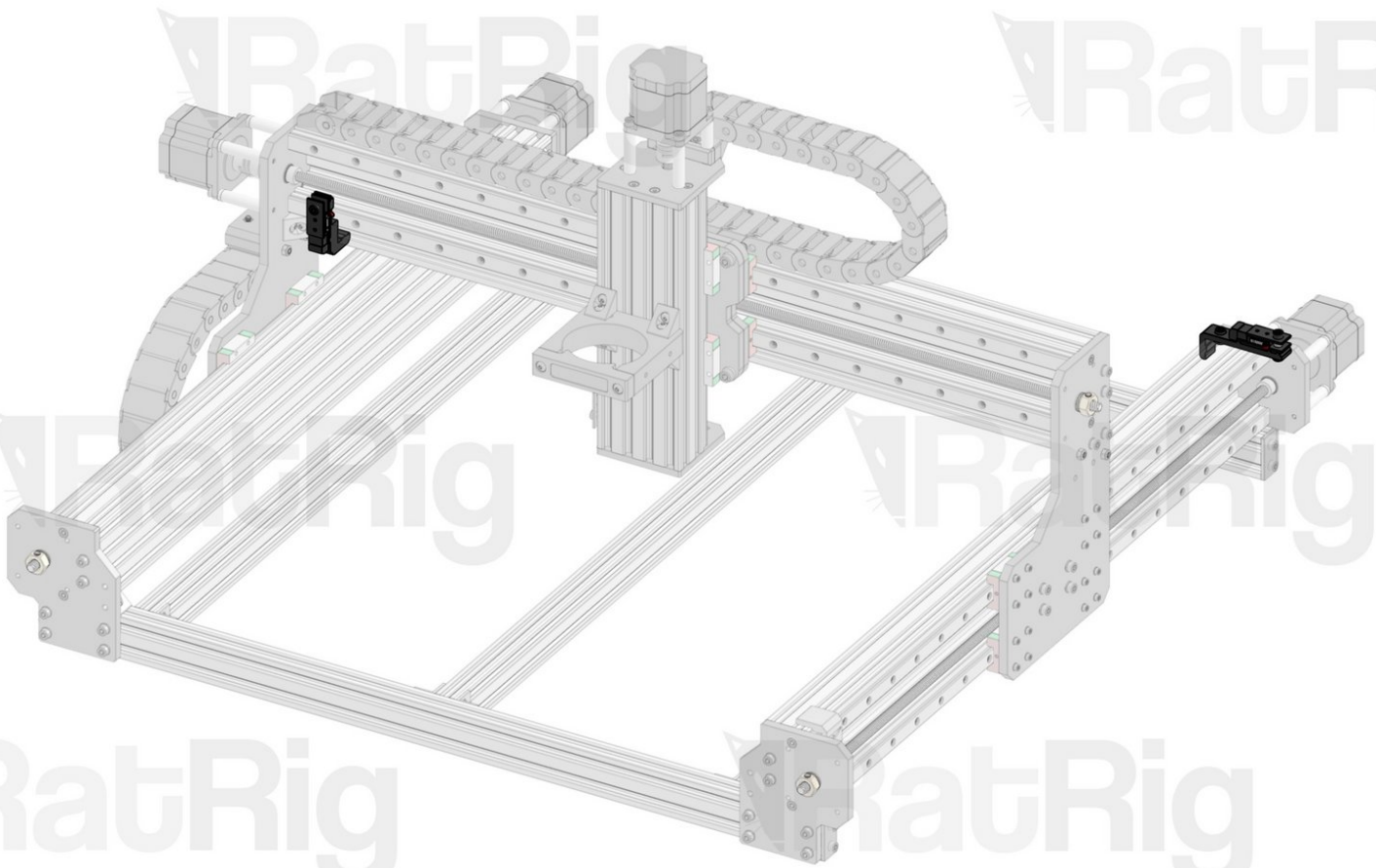


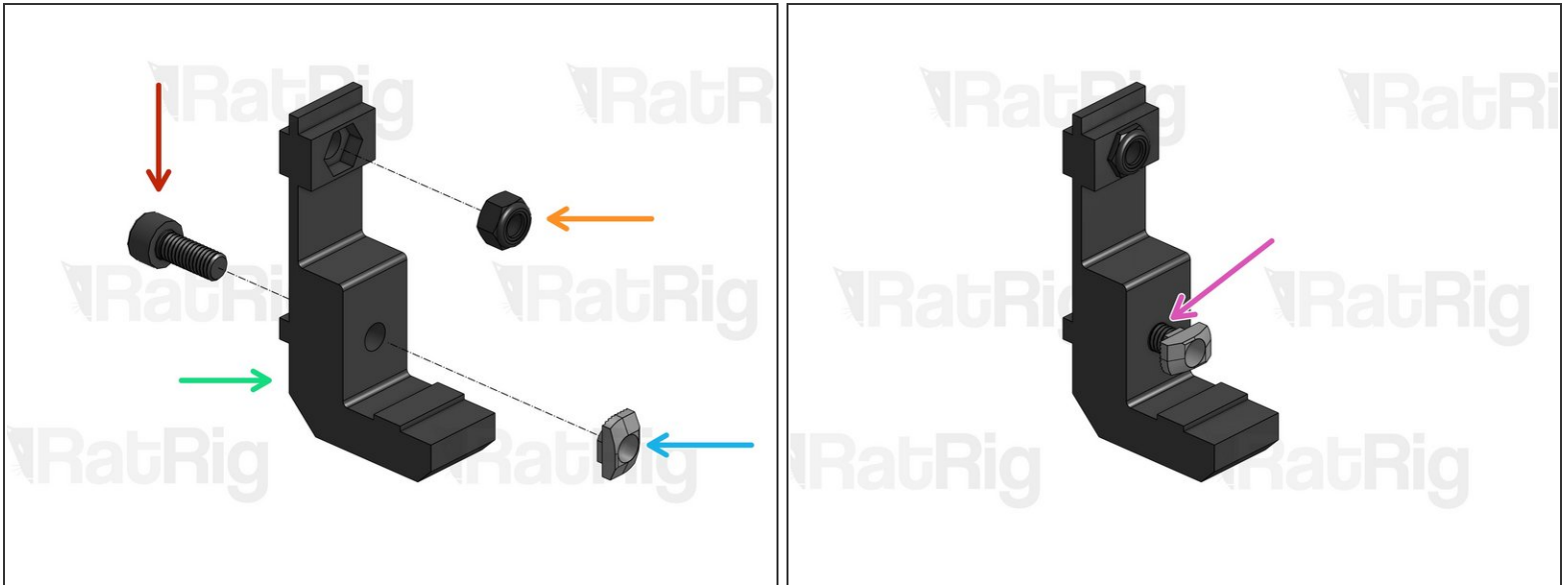
Rat Rig

08. X & Y Limit Switches

Written By: Rat Rig

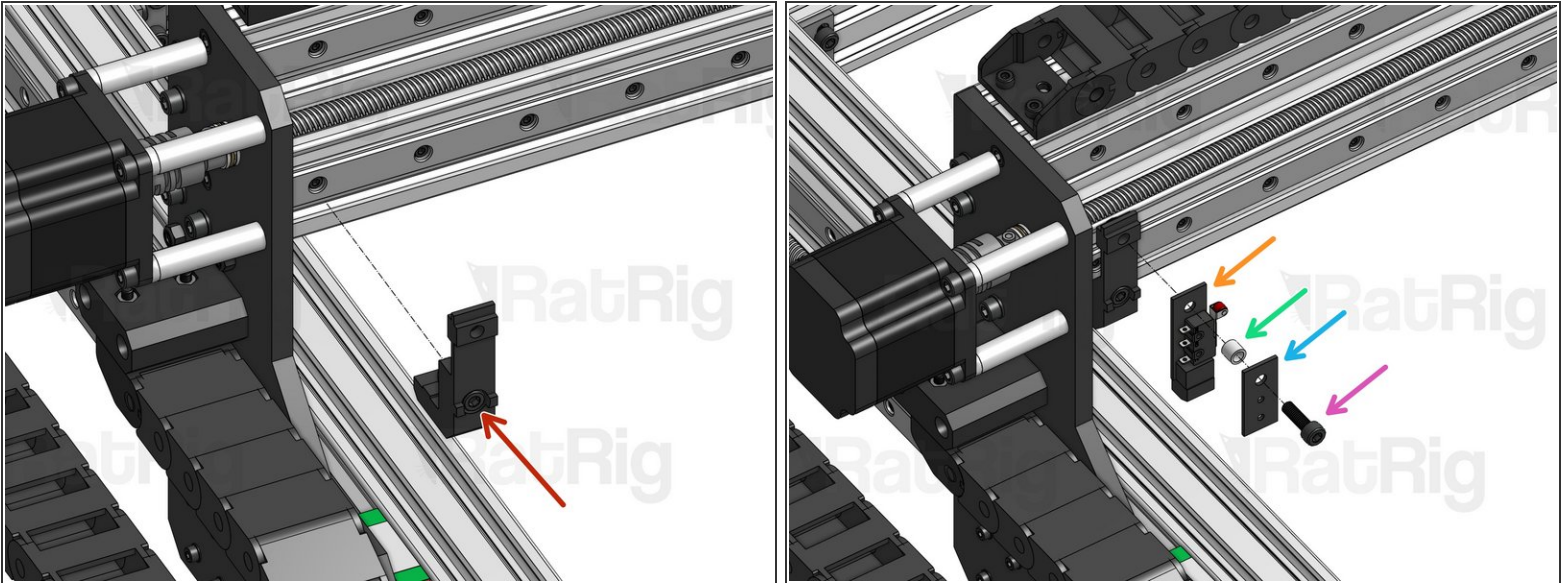


Step 1 — Set-up X Limit Switch Mount



- Cap Head Screw M5x12mm
- X Limit Switch Mount (Printed Part)
- Drop-in T-Nut M5
- Hex Locking Nut M5
- Screw T-Nut into position, but don't tighten just yet.

Step 2 — Mount X Limit Switch



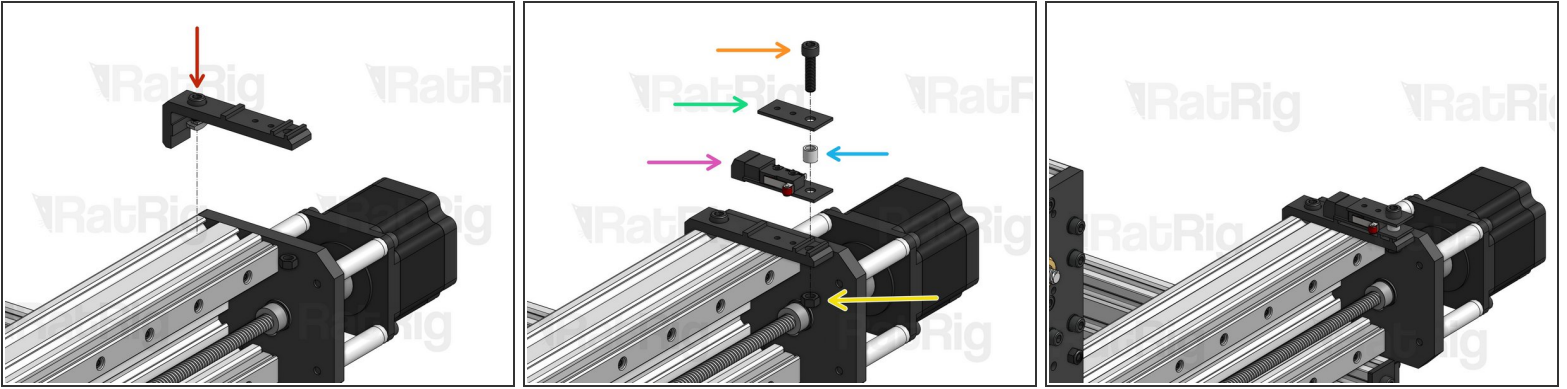
- Fit the T-Nut inside the slot and tighten the screw to lock the mount in place.
- Cap Head Screw M5x16mm
- Xtension Limit Switch small plate
- Xtension Limit Switch Nylon Spacer
- Xtension Limit Switch

Step 3 — Set up Y Limit Switch Mount



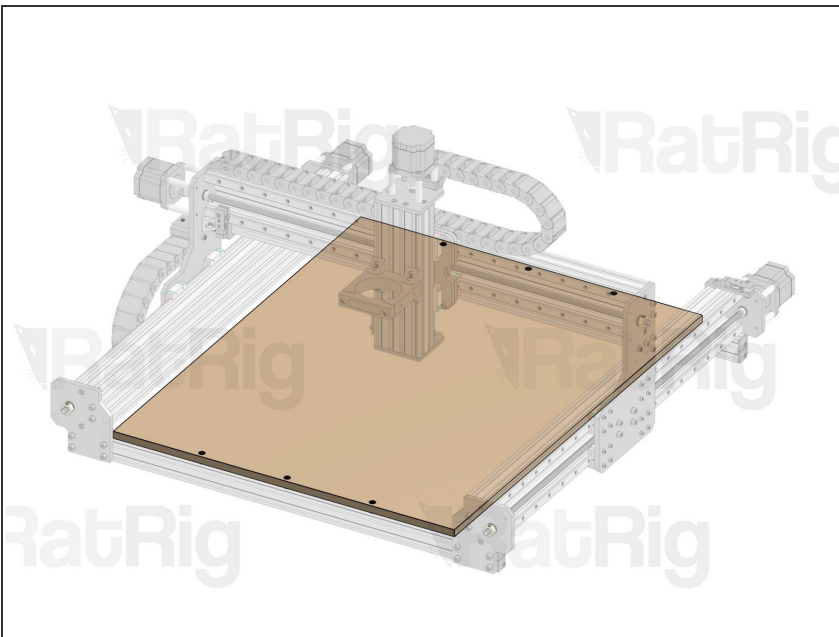
- Cap Head Screw M5x8mm
- Y Limit Switch Mount (Printed Part)
- Drop-in T-Nut M5
- Screw T-Nut into position, but don't tighten just yet.

Step 4 — Mount Y Limit Switch



- Fit the T-Nut inside the slot and tighten the screw to lock the mount in place.
- Cap Head Screw M5x20mm
- Xtension Limit Switch Small Plate
- Xtension Limit Switch Nylon Spacer
- Xtension Limit Switch
- Hex Locking Nut M5

Step 5 — Next guide



- Move on to the [Spoiler Board Installation](#).

