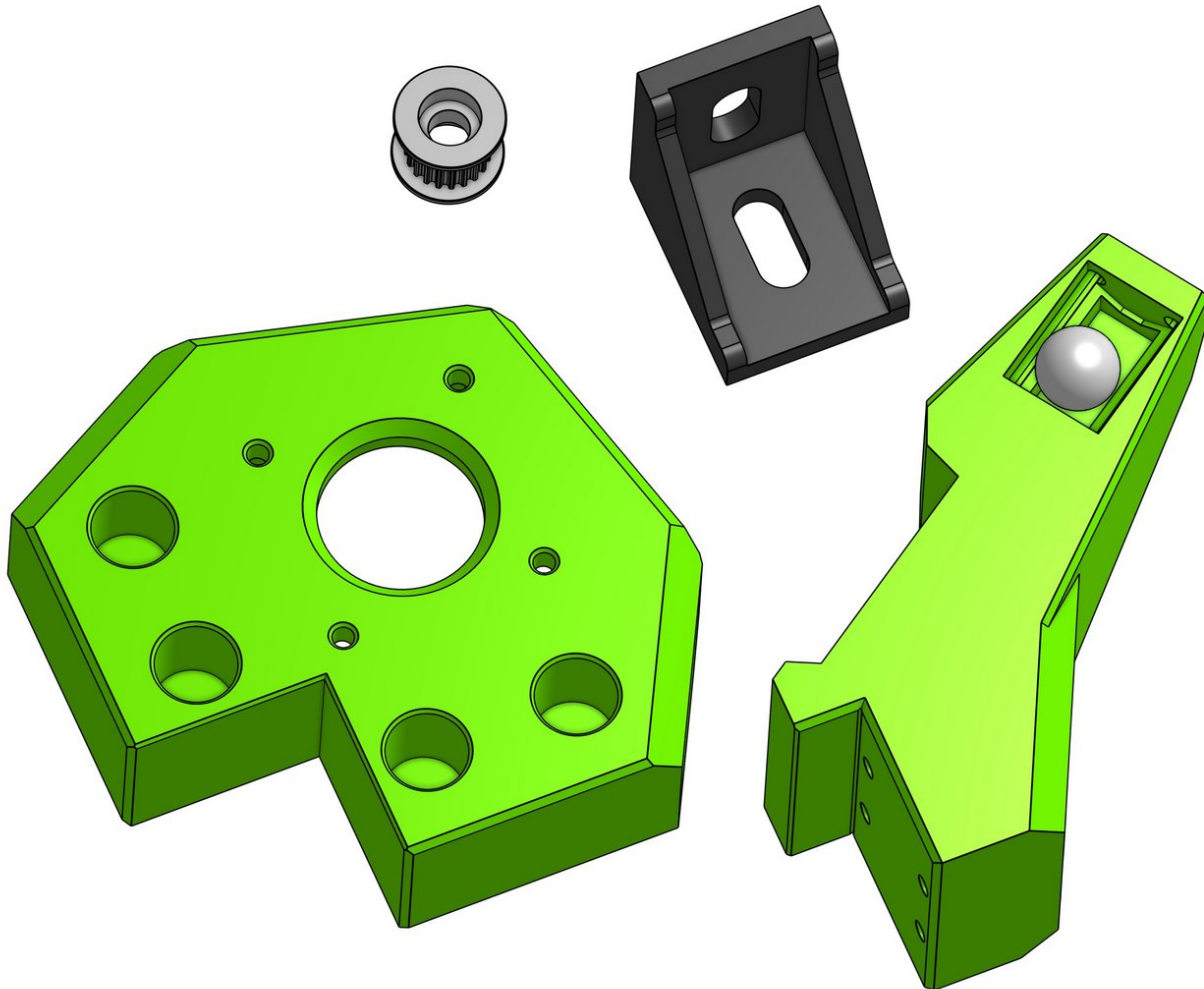


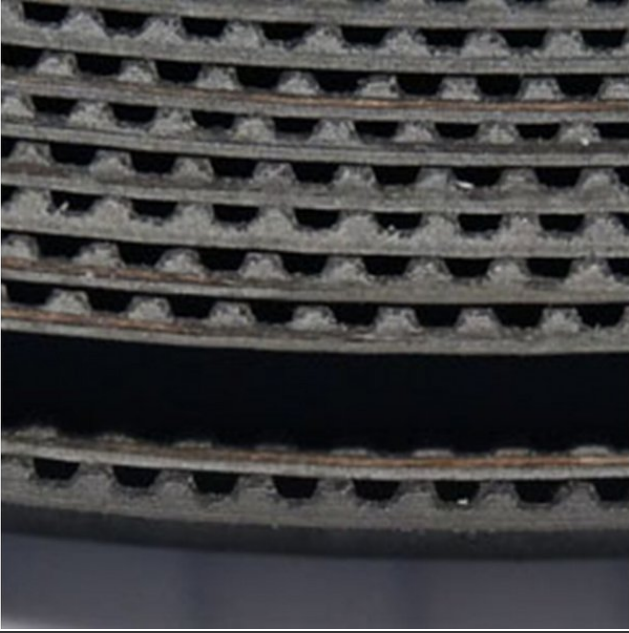
Rat Rig

00. Preparations

Written By: Paweł Kucmus

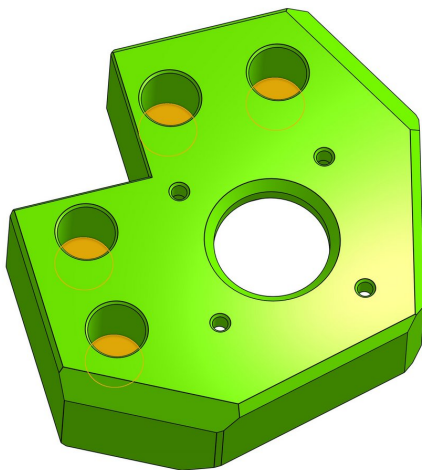


Step 1 — Cut the belt in half



- The belt is shipped as one piece - cut it in half
- Total belt lengths according to machine size:
 - 300 - 4.2m
 - 400 - 5m
 - 500 - 5.8m

Step 2 — Prepare printed parts

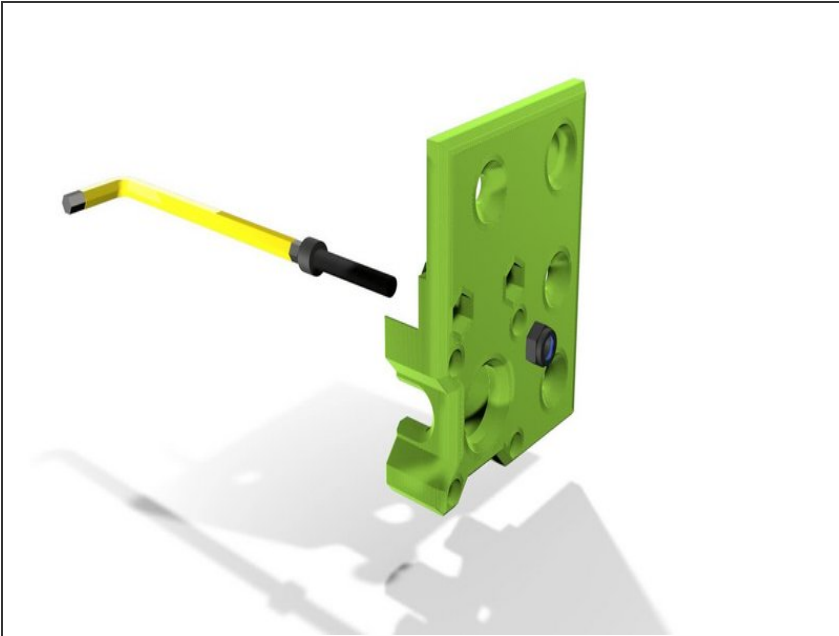


- The printed parts are made with sacrificial layers. You will notice that some holes are "blinded" with a thin

layer of plastic. That layer needs to be removed.

- You can use a screw driver, a drill, an Allen key to make short work of those layers

Step 3 — Pulling nuts from the back



❗ On a few occasions you will need to properly insert a **hex nut** in its socket

❗ This needs to be done properly and the angle of the nut needs to be almost perfect

⚠ Failing to properly seat a **hex nut** will result in thread binding and will make it almost impossible to rescue a part!

- Watch the animation showing how to seat a **hex nut**

Step 4 — Part Check



⚠ Machine sizes above 300: You will see a bag labeled *Specific parts*. This bag includes extra fasteners for your MGN linear rails, which are longer than the ones on the 300 version.

- If you're concerned that parts may be missing, check the kit [BOM](#).

Step 5 — Next guide...



- [01. Frame assembly](#)