

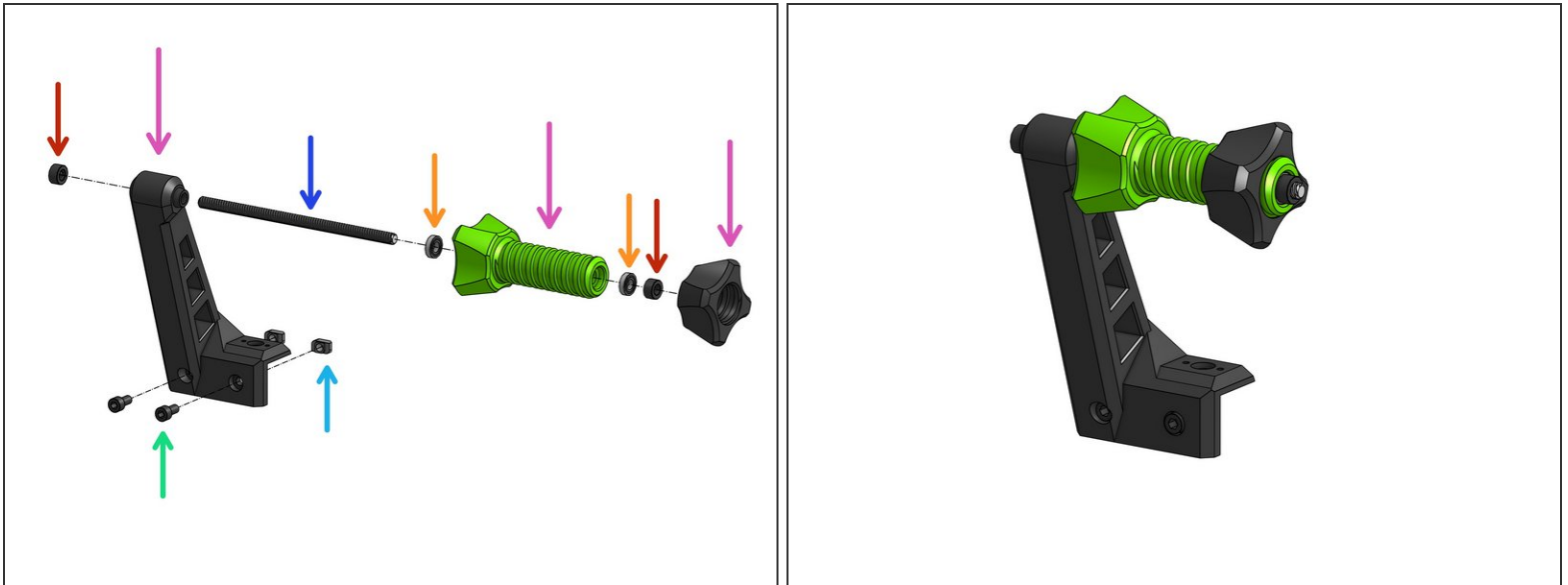
Rat Rig

09. Spool Holder (Optional)

Written By: Rat Rig

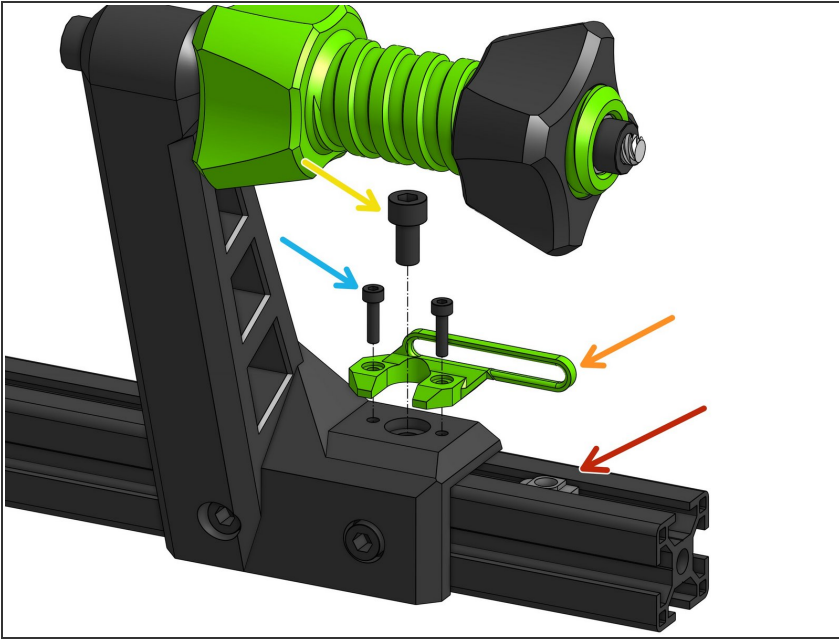


Step 1 — Assemble the Spool Holder



- Lock collars. After you stack this sub-assembly, tighten the set screws on the lock collars to lock the stack in place.
- Lead Screw
- Ball Bearing 688Z
- Cap Head Screw M6x12mm
- 3030 Drop-in T-Nut M6. Set in position, but don't tighten yet.
- Spool holder printed parts (get the STLs [here](#)).

Step 2 — Mount Spool Holder on Machine's Frame



- Cap Head M6x12mm
- 3030 Drop-in T-Nut M6. Slide it inside the slot until it's right underneath the M6 screw hole.
- Cap Head Screw M3x12mm
- Filament guide (printed part)